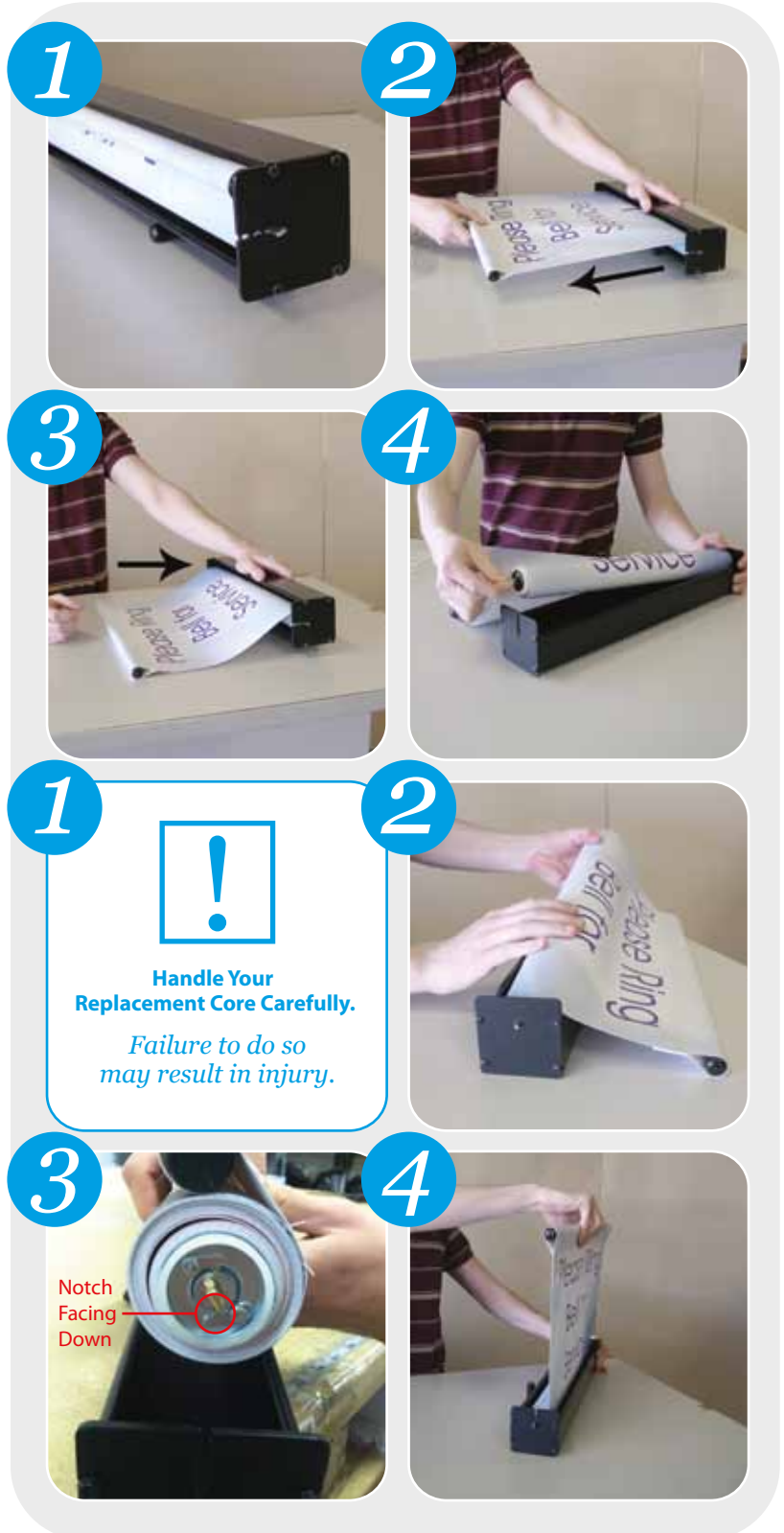


REMOVING BANNER AND ROLLER FROM BASE

- 1 STEP ONE**
Set retracted banner/base on it's back.
- 2 STEP TWO**
Pull out 12" of banner horizontally.
- 3 STEP THREE**
SLOWLY let banner retract until you feel the roller lock.
- 4 STEP FOUR**
Roll-ups up to 3' wide: Set base upright and lift spade end out.
Roll-ups over 3' wide: Turn base upside down to allow roller to fall out. (Do not let it fall and hit something that will scratch it. The vinyl is vulnerable to scratching at this point.)

INSTALLING BANNER AND ROLLER INTO BASE

- 1 STEP ONE**
Handle your replacement core carefully. Very gently touch the spade end of the roller to confirm core is wound. It should not move. **Do Not Turn Spade** if it gives any resistance. The spring will release, spin rapidly with force, and severely bruise your fingers.
- 2 STEP TWO**
See reverse for winding instructions if needed.
Place the round end of WOUND roller into the end plate with the round hole in it.
- 3 STEP THREE**
Place the spade (flat) end of the roller into the end plate with the slot in it **with the notch facing down**.
- 4 STEP FOUR**
Gently pull on the top of your banner a few inches and release when you feel the spring catch.



Caution!

Handle your replacement core carefully. Very gently touch the spade end of the roller to confirm that your core needs to be wound. (It will be wound before shipping but may release in transit.) Proceed with these instructions only if the spade turns easily. **Do Not Turn Spade** if it gives any resistance. The spring will release, spin rapidly with force, and severely bruise your fingers. If the spade gives any resistance your roller does not need to be wound. Return to Step 2 of *Installing Banner and Roller to Base* on reverse.

WINDING INSTRUCTIONS

1 STEP ONE

Place the round end of roller into the end plate with the round hole in it.

2 STEP TWO

Insert roller into base **Notch Down**.

3 STEP THREE

Pull banner vertically out of base about 3'.

4 STEP FOUR

Slowly let banner retract until you feel the roller lock.
Remove roller from base and roll banner back onto roller.



RETURN TO STEP 2 OF OF INSTALLING BANNER AND ROLLER INTO BASE ON REVERSE.

SETUP INSTRUCTIONS

1. Extend foot plate perpendicular to base.
2. Fully extend shock-corded pole and place pole on the post that extends from the foot.
3. Place your foot on the foot of the display. Insert the hook on the top of the back pole into the notch in the banner's top pole.

TAKE-DOWN INSTRUCTIONS

1. Place your foot on the display foot.
2. Placing hand on the back pole to keep it from moving.
3. Use your other hand to raise the top pole of the banner off the back pole hook.
4. Allow the banner to roll down into the base.